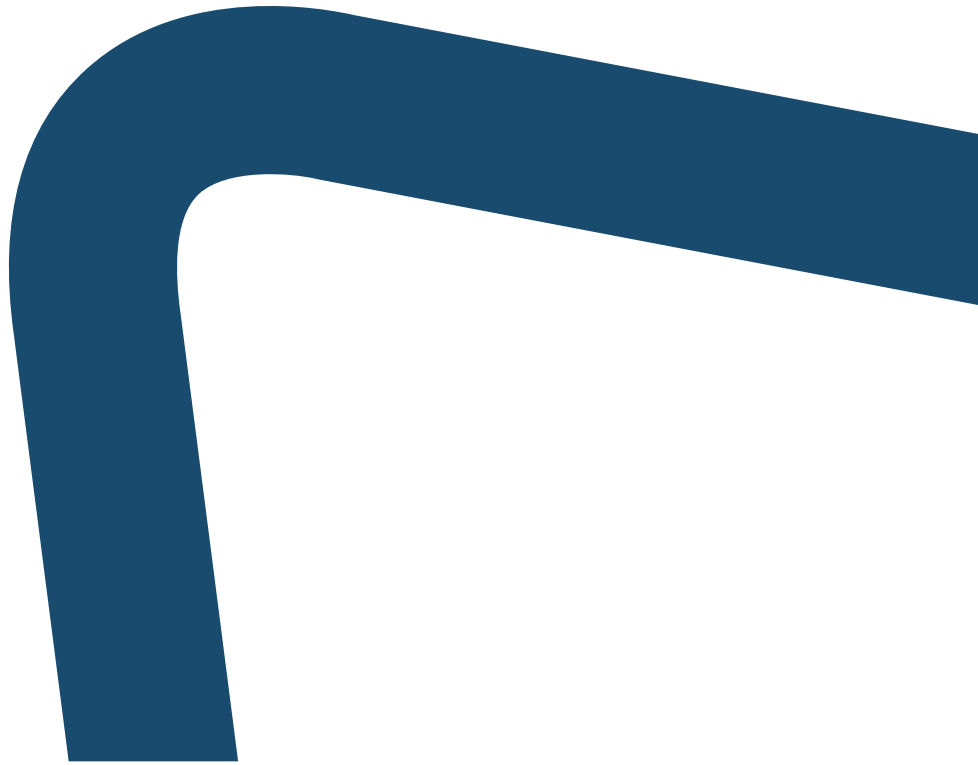




*Report to*  
**THE MINISTER  
OF LOCAL  
GOVERNMENT  
AND RURAL  
DEVELOPMENT**



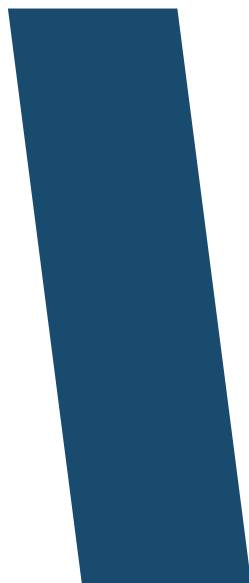




*Report to*

**THE MINISTER OF LOCAL  
GOVERNMENT AND  
RURAL DEVELOPMENT**

ON THE LEDUMADUMANE EAST BY-ELECTIONS



# *Table of* **CONTENTS**

Introduction and Background.....	07
Sensitisation and Outreach.....	07
Issuance of duplicate Cards.....	07
Media and Elections.....	07
Radio & Television.....	07
Newspapers.....	07
Social Media.....	08
Recruitment of Election Officials.....	08
Poll Staff.....	08
Logistics.....	08
Ballot Papers.....	08
Polling Booths.....	08
Distribution of Election Materials.....	08

---

ELECTION PHASE.....	09
Nominations.....	09
Polling.....	09
Counting.....	10
Results.....	10
Elections Observation.....	13
Election Petitions.....	13
Payment of Poll Staff.....	13
Expenditure.....	13
Challenges.....	14

---

---

The Honourable Minister  
Ministry of Local Government and Rural Development  
Private Bag 006  
Gaborone

The Honourable Minister,


In accordance with Section 65 A (13) of the Constitution of Botswana, we are submitting to you on behalf of the Commission, a report on the activities associated with the preparations for, and conduct of the Local Government by-election in the Ledumadumane East Polling District in the Mogoditshane Constituency, following the passing away of its respective elected Councillor.

On the 28th December 2021, the Honourable Minister of Local Government and Rural Development issued an Election Instrument, pursuant to Sections 154 (1) of the Electoral Act. The instrument designated 13th January 2022 as a day for receiving nominations and 5th February 2022 for taking of poll.

The by-election for the polling district was therefore, held accordingly on the 5th February 2022.

We now have the pleasure to submit our report on these elections.

Yours sincerely,



Honourable Justice A. B. Tafa  
Chairman

**INDEPENDENT ELECTORAL COMMISSION**



Ms D. L. Serumula  
Acting Secretary

**Independent Electoral Commission**

---

## **Introduction and Background**

This report presents an overview of the Ledumadumane East Polling District by-election held on the 5th February 2022. The Ledumadumane East by-election took place during the COVID-19 period, necessitating strict adherence to established preventative protocols.

Notably, of particular significance to this election was the unusual disturbing outbreak of intolerance, characterised by intimidation and threats to poll staff by some party supporters. Despite these threats and disturbances, the Ledumadumane East by-election was a success as the results were announced without any interference and within expected time. This report provides a comprehensive look at the overall processes of the Ledumadumane East by-election.

### **PRE-BY ELECTION PHASE**

#### **Sensitisation and Outreach**

Kgotla and Village Development Committee (VDC) meetings for the various affected constituents were held to increase voter education. Workshops were conducted to disseminate important information about electoral processes and the locations of various polling stations. In addition, to ensure that all stakeholders were adequately prepared and equipped for the by-election, the Commission held training workshops for poll staff, candidates, Polling Agents and security personnel.

#### **Issuance of duplicate Cards**

To encourage and enable citizens to participate in the by-election, duplicate voter registration cards were made available at all outstation offices for issuance to those who had misplaced or lost their originals, prior to the by-election.

#### **Media and Elections**

Recognising the importance of the media in elections, the Commission launched targeted communication efforts to keep all stakeholders up to date on the by-election and the electoral process. The Commission, in particular, used social media platforms, radio, television, and print media to carry out media campaigns.

#### **Radio & Television**

Radio Botswana (RB) and Botswana Television (BTV) were used extensively to educate the general population about the by-election due to their widespread coverage.

#### **Newspapers**

In order to reach out to the general public, the Commission used a variety of newspapers as part of its publicity strategy. Newspapers carried publicity messages about the by-election and electoral processes because of their long news cycle and widespread distribution.

---

## **Social Media**

To increase participation, the IEC's Facebook page, the BW Government Facebook page, YouTube and website were used to connect with young people to encourage them to participate in the by-election.

## **Recruitment of Election Officials**

### **Poll Staff**

During the election, 29 Public Officers were hired as poll staff, with one (1) and four (4) recruited as Returning Officers and Assistant Returning Officers, respectively. The rest of the officers were Presiding Officers, Polling Officers, and Tallying Officers. All poll staff were trained to conduct the poll in an efficient and effective manner, in accordance with the electoral framework.

### **Logistics**

As a critical process, logistical planning required the Commission to promptly implement effective measures to ensure a coordinated and inclusive approach to the by-election. A large part of the preparations for the election included securing transportation, as well as procuring and packaging election materials.

### **Ballot Papers**

One Thousand, Five Hundred (1500) ballot papers were printed and delivered on time for the by-election.

### **Polling Booths**

To ensure that all voters, including those with special needs, could vote freely and in secrecy, six (6) specially designed booths were placed throughout the affected polling stations.

### **Distribution of Election Materials**

To ensure the smooth running of the by-election, all election materials were distributed on time Sensitive election materials were collected by Returning Officers and distributed to the Presiding Officers of the respective polling places. Other election materials were equally distributed to all polling stations.

Eleven (11) vehicles were sourced from the Ministry of Local Government and different Government departments to provide transport.



---

## ELECTION PHASE

### Nominations

Nominations for the Ledumadumane East Polling District were received on January 13, 2022, in accordance with Section 35 of the Electoral Act. Two candidates, all male, were duly nominated to contest in the by-election;

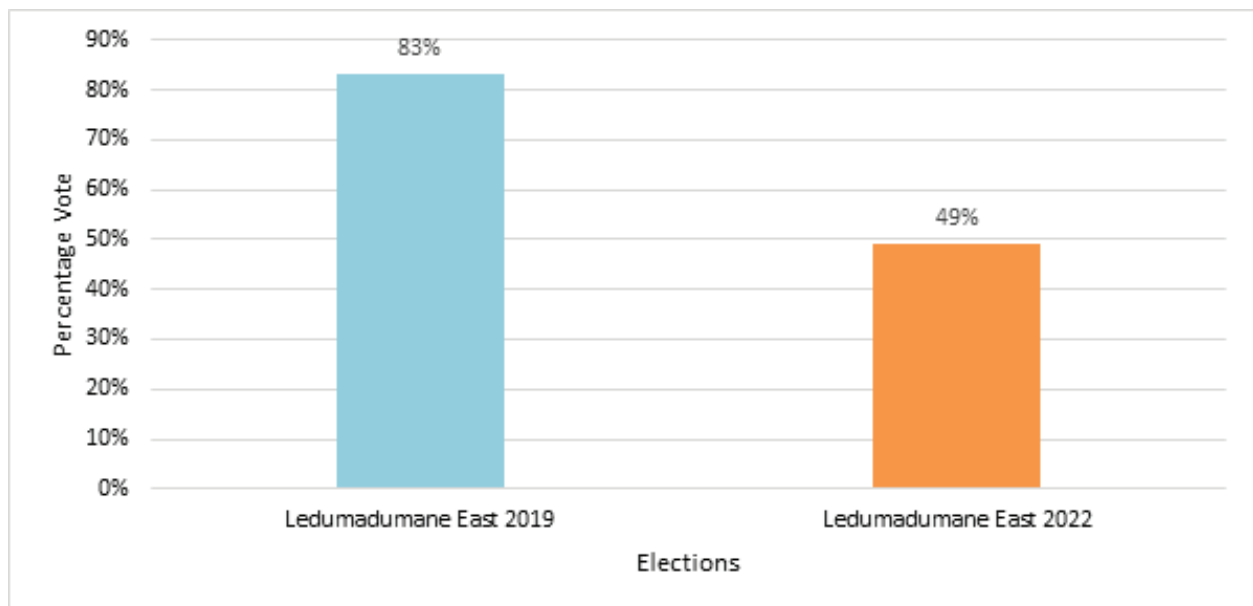
- Mr. Kgwatalala Thata of Botswana Democratic Party (BDP)
- Mr. Moipolai Simon Oupa of the Umbrella for Democratic Change (UDC).

### Polling



*Voters on queue to cast their vote during the Ledumadumane East by-election.*

Figure 1 depicts the voter turnout for the Ledumadumane East Polling District by-election in February 2022. The voter turnout accounted for 49% of the total number of people who registered, which totalled One Thousand Three Hundred and Twenty (1320). Comparatively, this voter turnout was only about half of the total turnout in the 2019 general election.



*Figure 1: Voter turnout for Ledumadumane East*

### Counting

Following the close of the poll, Presiding Officers performed a ballot paper account and transported ballot boxes to the Counting Centre, where verification began prior to counting of votes. This procedure ensured that the number of used and unused ballot papers matched the number of ballot papers issued to the Presiding Officer by the Returning Officer prior to the start of the poll. The Returning Officer then facilitated the counting of ballots from all teams. Tally sheets were used to keep count for each candidate as votes were sorted and allocated accordingly. This administrative arrangement has been shown to speed up counting and improve its accuracy.

The Returning Officer is authorised by Section 77 of the Electoral Act to declare the results of the poll at the place of counting and then forward them to the Commission's Secretary. The results of the Ledumadumane East by-election were announced promptly and without incident, within six (6) hours of closing of polling stations.

### Results

The percentage of votes cast for each political party is depicted in Figure 2. The Umbrella for Democratic Change (UDC) received 58% of the popular vote, with the Botswana Democratic Party (BDP) receiving 41%. Rejected votes accounted for only 1% of the total votes cast.

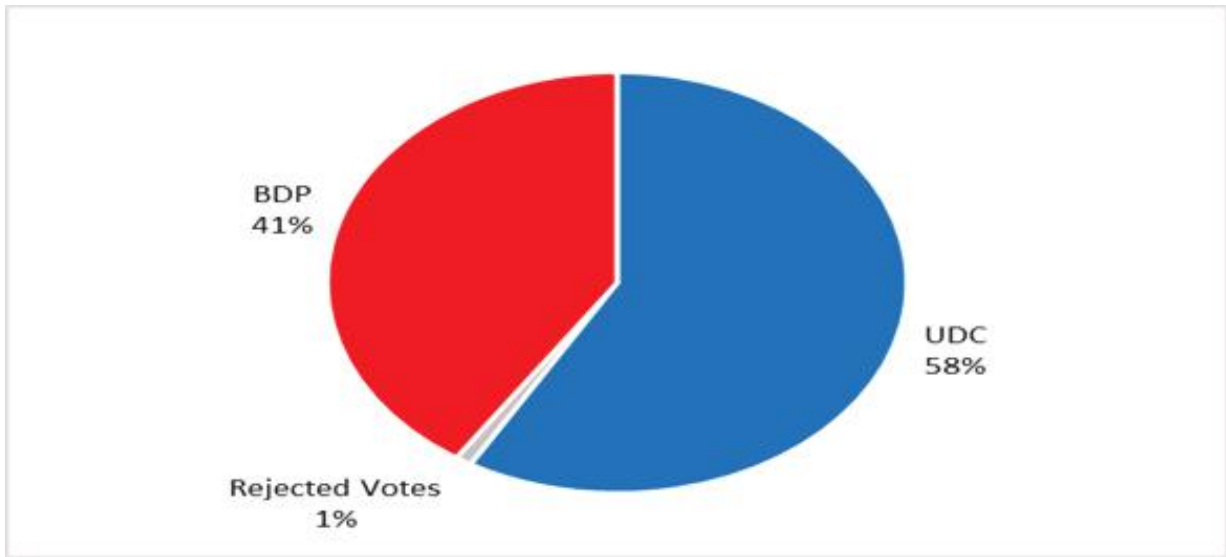


Figure 2: Percentage of votes received per political party

Figure 3 depicts the percentage of votes cast in the Ledumadumane East by-election, disaggregated by gender. Women accounted for a comparatively higher number (52%) of the votes cast, out of a total of registered females. This follows a similar pattern to previous by-elections, in which more women than men registered and voted.

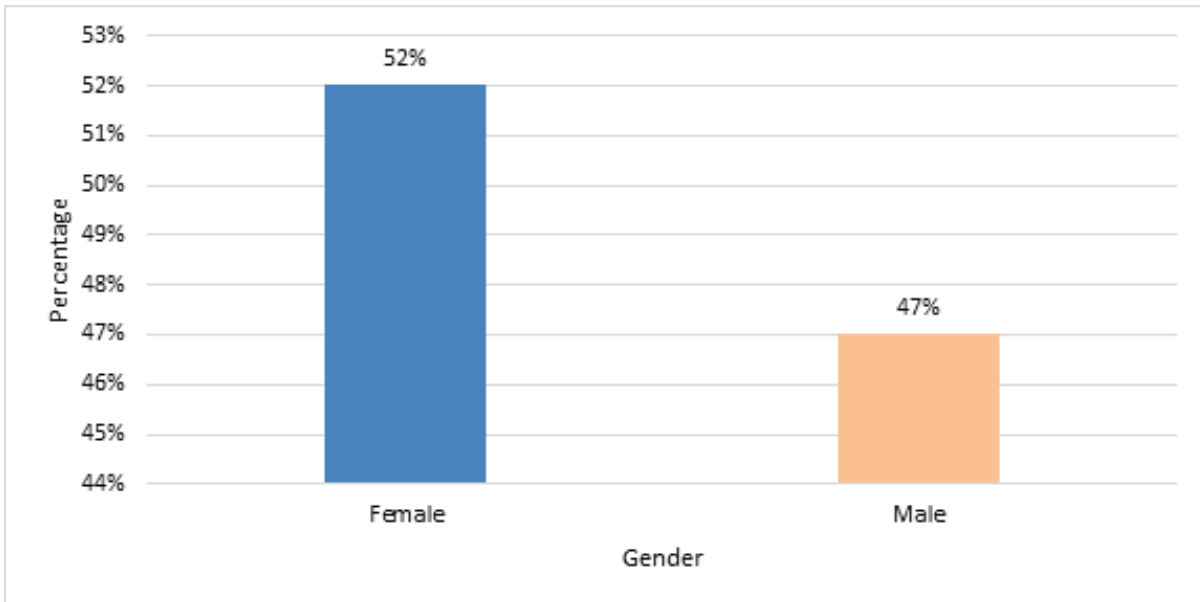


Figure 3: Percentage of votes according to gender

An examination of votes cast by age group reveals participation of the youth is comparatively low. Figure 4 shows that only 29 % of young people between the ages of 18 and 25 who had registered voted. Additionally, the graph demonstrates that as one's age increases, so does one's likelihood of voting in elections. This highlights the critical need for targeted voter education programs for the Youth in order to increase their election participation.

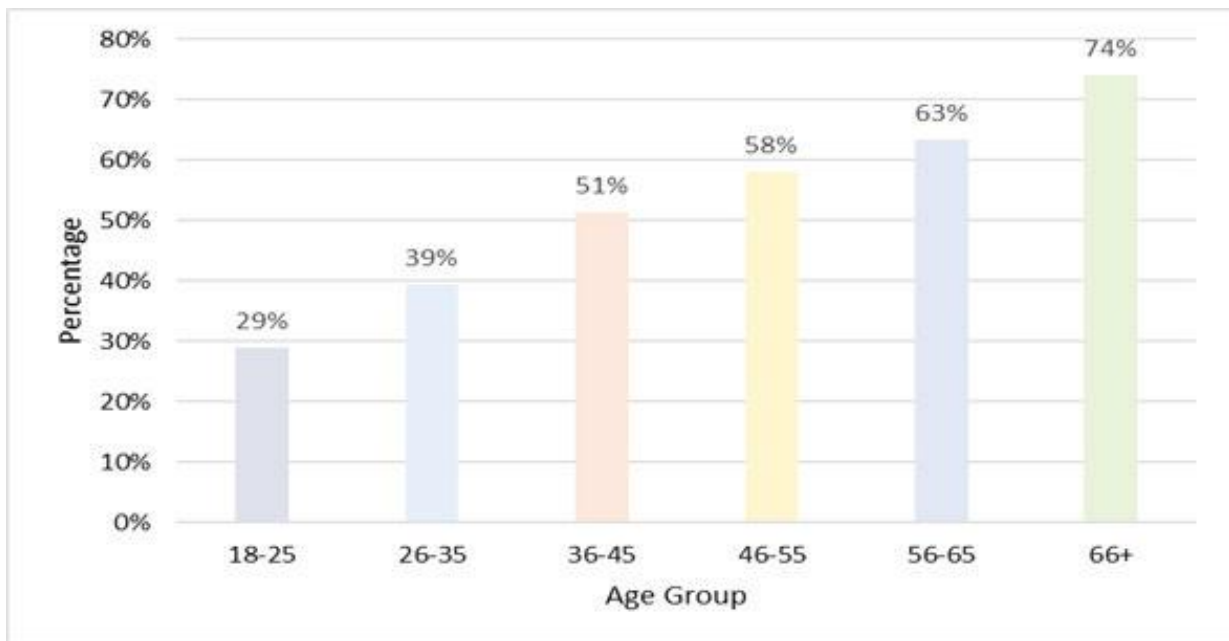


Figure4: Percentage of votes per age group



A woman casting her vote during Ledumadumane East By-Election

---

### **Elections Observation**

Election observation enables an assessment of the degree to which democratic election principles are being followed. The Ledumadumane East by- election was observed by nine (9) local media houses.

### **Election Petitions**

Election petitions are a critical component of the democratic process. The electoral law gives petitioners the authority to challenge the outcome of an election on account of allegations of irregularities, disqualification, corruption, or illegal practices. A voter or candidate for an election in a polling district may file a petition with the High Court. The petition must be filed within Thirty (30) days of the release of the results and must be heard and decided within Ninety (90) days of filing. There were no petitions filed to challenge the outcomes of the Ledumadumane East Polling District by-election.

### **Payment of Poll Staff**

A basic overtime allowance calculated on the basis of the number of hours worked must be given to poll staff in order to adequately compensate them for their services. Poll Staff are compensated in accordance with legislative requirements through an official payroll system that determines the appropriate statutory deductions per person.

All Poll staff for the Ledumadumane East Polling District by-election have been paid for their excellent service.

### **Expenditure**

Elections are by nature costly. Ledumadumane East Polling District by-election had a budget of Three Hundred and Thirty Eight Thousand, Four Hundred and Fifty Five Pula and Fifty-Eight thebe (P 338,455.58) From preparation to election day, the total electoral expenditure for the by-election amounts to a total of One Hundred and Forty-Seven Thousand, Eight Hundred and Eighty-Four Pula and Eighty Thebe (P147, 884, 80). A wide range of critical pre-election activities and materials were covered by the budget, including publicity, workshops, and election materials, all of which were necessary to ensure the smooth delivery of a free and credible election process.

---

## Challenges

- At the close of poll, some supporters engaged in disturbing behaviour of intimidation and violence. They congregated within polling station chanting slogans and even hurling abusive language to poll staff, contrary to the provision of the Electoral Act.
- Supporters' vehicles intercepted the official vehicles and it posed a grave risk to poll staff and public at large
- Some poll staff members were denied entry into the Counting Centre. They were insulted, intimidated, and their lives threatened.
- As a result of the manual nature of collecting voter information for the 2019 General Election registration process, there were few inaccuracies in the Election Roll used for the Ledumadumane East Polling District by-election. Some voters were mistakenly assigned to the wrong polling stations, while others were rejected. Nevertheless, the Commission was able to assist people who showed up at polling stations, except for those who were rejected or were not on the roll.

## Conclusion

The Ledumadumane East Polling District By-Election Report pointed out various critical aspects of the conduct of the 5th February, 2022 by-election. A detailed analysis of the entire process is provided, as are lessons learnt for future elections in Botswana.

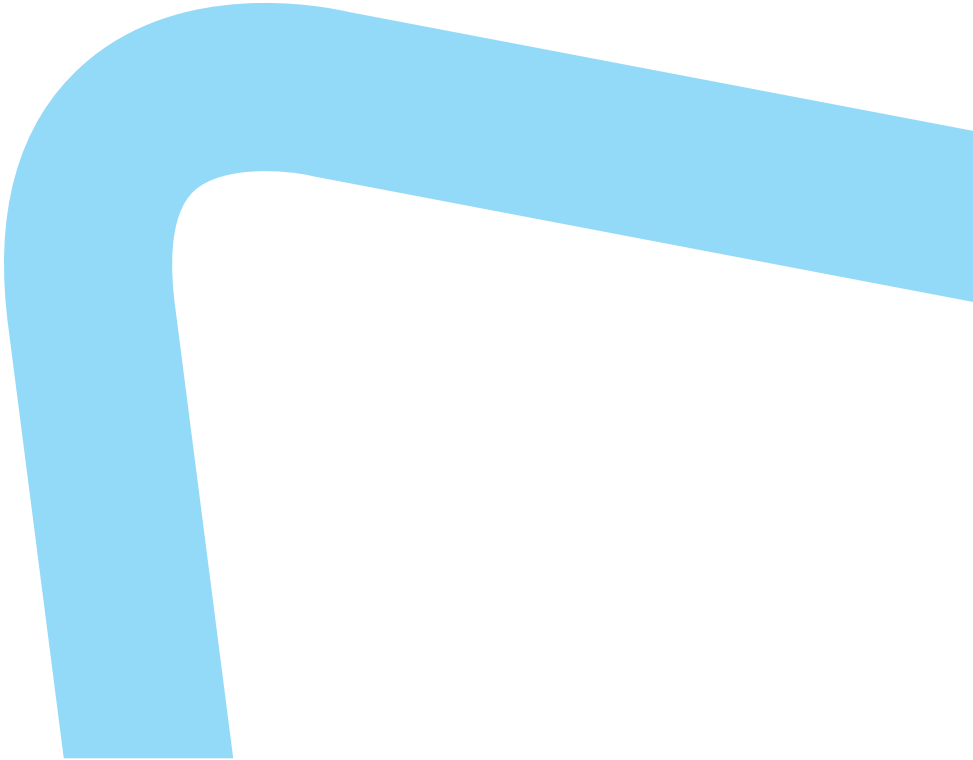
The elections were held amid the persistent threat of the Covid-19 Pandemic, and the Commission was successful in enforcing compliance to established Covid-19 protocols. The few queries received about the roll emphasise the need to institute improvements in voter registration, including the transition from manual to automated data collection during application for registration.

Moreover, it is necessary to intensify dialogue with political parties in order to allay emerging fears and reduce the proliferation of negative perceptions on the Commission, thereby further ensuring the integrity of the Botswana election process.

In order to address the low voter turnout that has been realised, efforts to increase citizen participation in the electoral process must be intensified. Continued presence of rejected ballots necessitates increased voter education in order to ensure that voters possess the necessary knowledge to vote effectively.

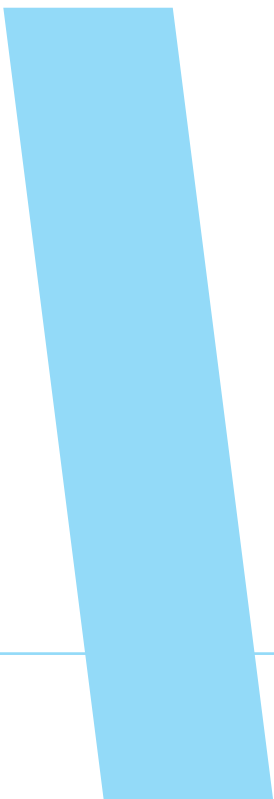


Despite a few isolated incidents of intolerance, the report shows that the by-election was largely a success, with the results being released without incident and thus being regarded as credible.



# ANNEXURES

LEDUMADUMANE EAST BY-ELECTION





## Results

Polling District Code	Polling District Name	First Name	Last Name	Gender	Party	Registered Voters	Votes Received	Valid Votes	Rejected Votes	Total Votes	% Voter Turnout	Win Margin
317	Ledumadumane East					1320		646	6	652	49%	116
		Simon Oupa	Moipolai	M	UDC		381					
		Thato	Kgwatalala	M	BDP		265					

## Votes cast by Gender

Polling Station	Female			Male			Grand Total
	Didn't Vote	Vote Cast	Female Total	Didn't Vote	Vote Cast	Male Total	
Kgwanayape Kgotla	146	146	292	149	138	287	579
Ledumadumane Kgotla	56	100	156	70	85	155	311
Moamogwe Primary School	121	101	222	130	88	218	440
<b>Grand Total</b>	<b>323</b>	<b>347</b>	<b>670</b>	<b>349</b>	<b>311</b>	<b>660</b>	<b>1330</b>

## Votes cast by Age Group

Polling Station	18-25		26-35		36-45		46-55		56-65		66+		Grand Total
	Didn't Vote	Vote Cast	Didn't Vote	Vote Cast	Didn't Vote	Vote Cast	Didn't Vote	Vote Cast	Didn't Vote	Vote Cast	Didn't Vote	Vote Cast	
Kgwanayape Kgotla	42	12	106	77	71	67	45	66	24	49	7	13	579
Ledumadumane Kgotla	12	11	43	40	30	50	26	36	8	19	7	29	311
Moamogwe Primary School	30	11	107	49	50	42	34	43	24	29	6	15	440
<b>Grand Total</b>	<b>84</b>	<b>34</b>	<b>256</b>	<b>166</b>	<b>151</b>	<b>159</b>	<b>105</b>	<b>145</b>	<b>56</b>	<b>97</b>	<b>20</b>	<b>57</b>	<b>1330</b>

## Kgwanayape Kgotla vote cast per Age Group by Gender

Polling Station	Age Group	Female			Male			Grand Total
		Didn't Vote	Vote Cast	Females Total	Didn't Vote	Vote Cast	Males Total	
Kgwanayape Kgotla	18-25	23	5	28	19	7	26	54
	26-35	52	43	95	54	34	88	183
	36-45	34	35	69	37	32	69	138
	46-55	22	33	55	23	33	56	111
	56-65	11	21	32	13	28	41	73
	66+	4	9	13	3	4	7	20
<b>Grand Total</b>		<b>146</b>	<b>146</b>	<b>292</b>	<b>149</b>	<b>138</b>	<b>287</b>	<b>579</b>

### Ledumadumane Kgotla vote cast per Age Group by Gender

Polling Station	Age Group	Female			Male			Grand Total
		Didn't Vote	Vote Cast	Females Total	Didn't Vote	Vote Cast	Males Total	
Ledumadumane Kgotla	18-25	6	7	13	6	4	10	23
	26-35	20	22	42	23	18	41	83
	36-45	13	28	41	17	22	39	80
	46-55	10	16	26	16	20	36	62
	56-65	4	9	13	4	10	14	27
	66+	3	18	21	4	11	15	36
<b>Grand Total</b>		<b>56</b>	<b>100</b>	<b>156</b>	<b>70</b>	<b>85</b>	<b>155</b>	<b>311</b>

### Moamogwe Primary School vote cast by Age Group by Gender

Polling Station	Age Group	Female			Male			Grand Total
		Didn't Vote	Vote Cast	Females Total	Didn't Vote	Vote Cast	Males Total	
Moamogwe Primary School	18-25	9	7	16	21	4	25	41
	26-35	54	22	76	53	27	80	156
	36-45	25	22	47	25	20	45	92
	46-55	14	24	38	20	19	39	77
	56-65	16	18	34	8	11	19	53
	66+	3	8	11	3	7	10	21
<b>Grand Total</b>		<b>121</b>	<b>101</b>	<b>222</b>	<b>130</b>	<b>88</b>	<b>218</b>	<b>440</b>



**Telephone: 3612400**  
**Fax: 3900581/ 3905205 / 3190889**  
**Toll Free: 0800 600 710**

Plot 63726, Acumen Park  
(Between Grant Thornton and Twin Towers Offices)  
Private Bag 00284, Gaborone

 0800 600 710    IEC Botswana    [www.iec.gov.bw](http://www.iec.gov.bw)